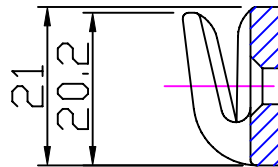


M4 4/4.2mm ϕ 2 - 5mm
 #8 (5/32") N0.8 1/16" - 3/16"

Section 'AA'



21

20.2

10.5

48.9

R10.5

2 Holes ϕ 4.8
 countersunk ϕ 8.0x90°

3.8

12.8

69.9

Issue: 3. May 2006
 ID213.dwg

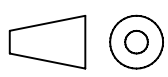
Material:
 Nylon

Installation Drawing for:-
CL213
 Fine Line
 (Starboard)

Clamcleat®
 Rope cleats

Clamcleats Limited
 Watchmead
 Welwyn Garden City
 Hertfordshire AL7 1AP
 England

Telephone +44 (0)1707 330101
 Fax +44 (0)1707 321269
<http://www.clamcleat-rope-cleats.com>



Scale 1:1
 All dimensions in mm.